

**Aaditri's**  
**S.V. HEIGHTS**



Constructing more Than a mere Shelter

A Venture by Aaditri Constructions





## About Us

Aaditri Constructions, famous for its perfection and dedication for the Real Estate Construction in Hyderabad. We strive to bring you the best and quality work. Our completed projects include the most excellent Industrial Building Construction in Hyderabad. From futuristic residential apartments to world class viable complexes we are the ones who have introduced the new age living in Twin City.

After being established in Hyderabad, the Aaditri Constructions has traveled a long way to become one among the major Constructing Company in city. We are specialized in Constructing Residential and Commercial Apartments and Buildings.

## Mission

Our Mission is to develop productive, cost-effective, technologically advanced, safe and reliable Construction. Always keep the customers' requirements in mind while constructing, and use the best resources available to provide a perfectly tailored construction design.

## About S.V Heights

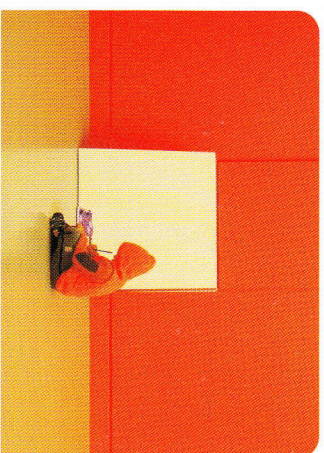
S.V Heights, the new project of Aaditri Construction, is a project that is dedicated to lifestyle living. Situated in prime location at Kondapur, S.V.Heights promises to be an exclusive residential address offering its residents a unique lifestyle. With all modern civic amenities, as well as plenty of peace and serenity, this unique development differentiates your home by providing an environment, which is modern, aesthetic and with a distinctive design of its own.

## Vision

With S. V. Heights we made the best affordable and accessible apartment through continual innovations and complete quality deliverance. Our Vision is to see ourselves as a group of people who always approach their work with passion and creativity to create new benchmarks in the quality of our Constructions.

# SPECIFICATIONS

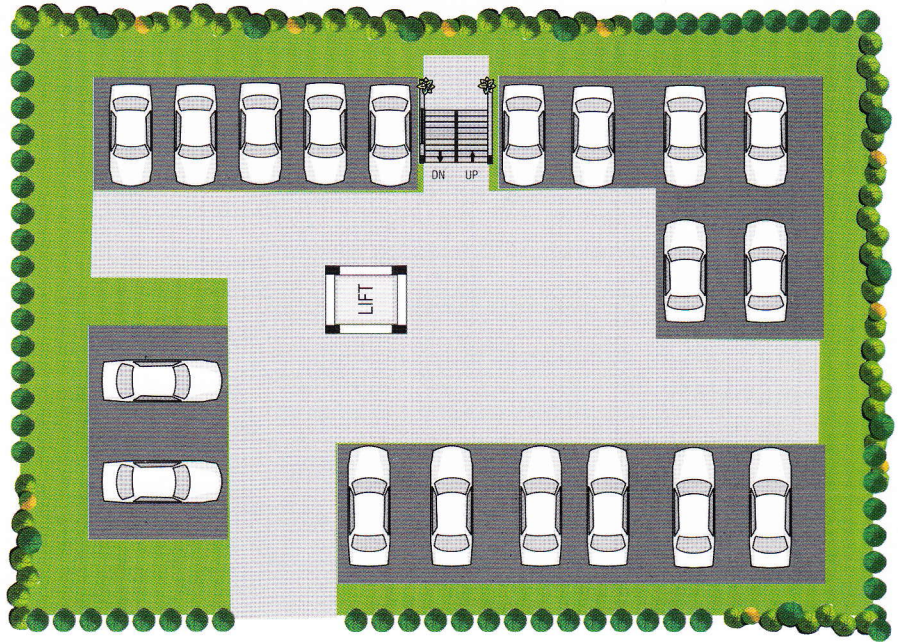
- Structure** : Footings, Columns, beams and slabs in RCC grade.
- Super Structure** : All external walls of 9" thick and internal walls of 4 1/2" thick table molded quality Red bricks in cement mortar.
- Plastering** : Two coats of cement plastering with Sponge finishing.
- Main Door** : Best Teak wood door frames and teak wood shutters aesthetically designed with fine finished melamine polishing and designer hardware of reputed make.
- Internal Doors** : Best teakwood frames and shutters with flush doors of good quality.
- Windows** : Windows frames and shutters are with complete UPVC with glass panels fitted with elegantly designed MS painted grills and standard hardware.
- Flooring** : Vitrified tiles with 4" skirting.
- Painting** : Smooth finish with Altek and with plastic emulsion paint over accost of primer for all the internal walls and exterior emulsion paint of Asian/CI make over a coat of primer for the exterior's two coats of enamel paint with grey/luppum for internal doors windows and grills.
- Electrical** : Concealed multi strand copper wiring with 3 phase meters and MCB,s Good quality modular switches, power plugs for geyser, washing machine, cooking range and refrigerators.
- Telephone & TV** : Concealed point in hall and master bedroom and internet cable provision in hall.
- Kitchen** : Granite slab for kitchen platform with glazed ceramic tiles dado upto 2'-0" height with built-in-Steel sink, ceramic tiles dadoing will be provided in the wash area upto 3'-0" height.
- Toilets** : Ceramic anti skid tiles for flooring and walls with glazed ceramic tiles dadoing upto 7'-0" height of Johnson or equivalent make, good quality sanitary ware with bathroom fittings of reputed make.
- Lift** : Thomson make of six passenger capacity lifts to be provided.
- Generator** : standby generator of reputed make to operate lift, pumps, lobby and staircase lighting.



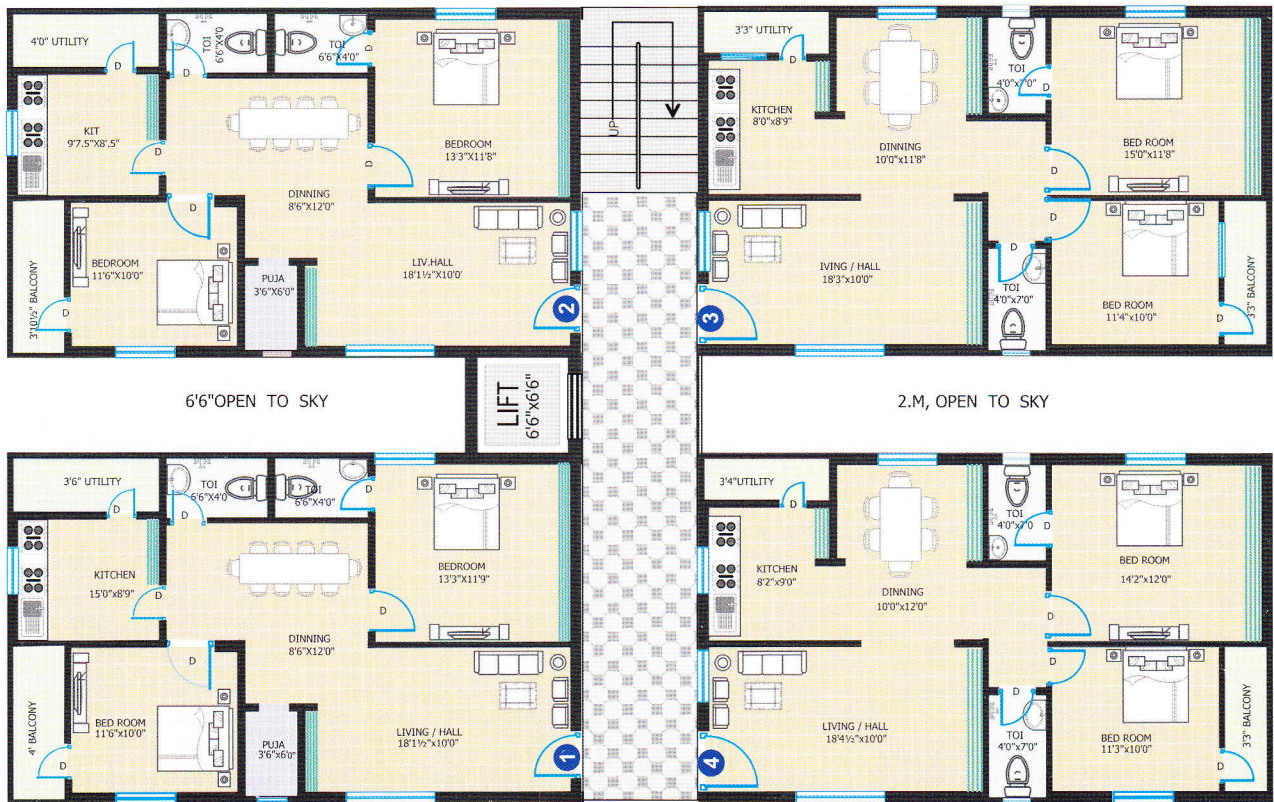


Block - A  
 Each Flat Area  
 1138 Sft

Car Parking Plan For Block - A



Floor Plan For Block - A



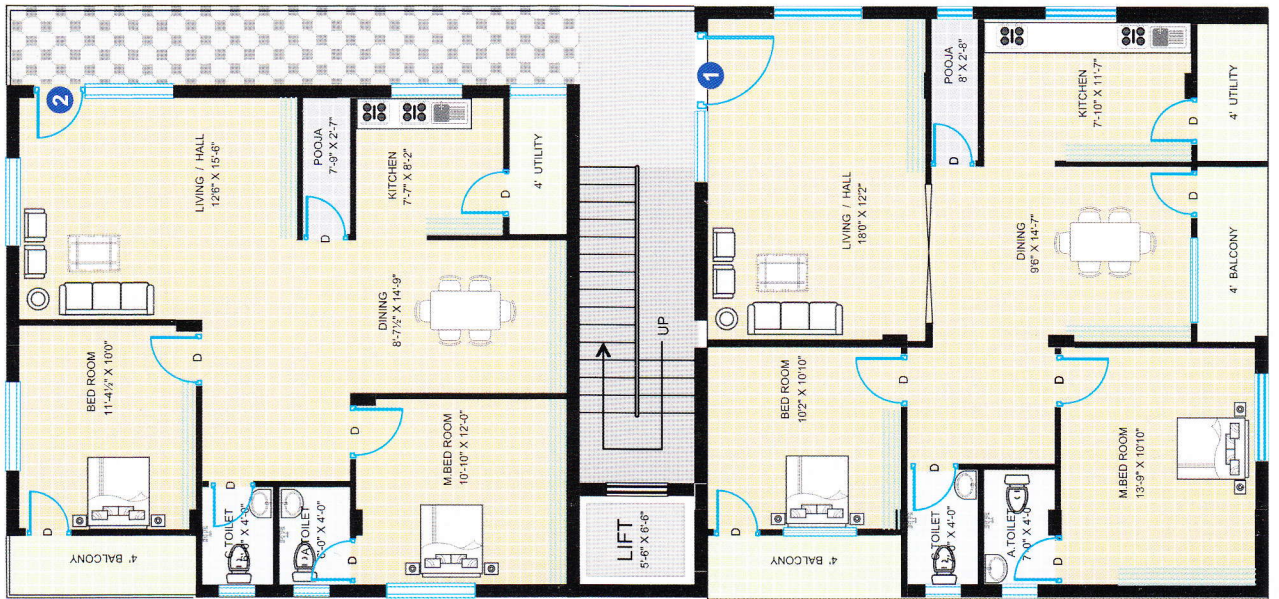
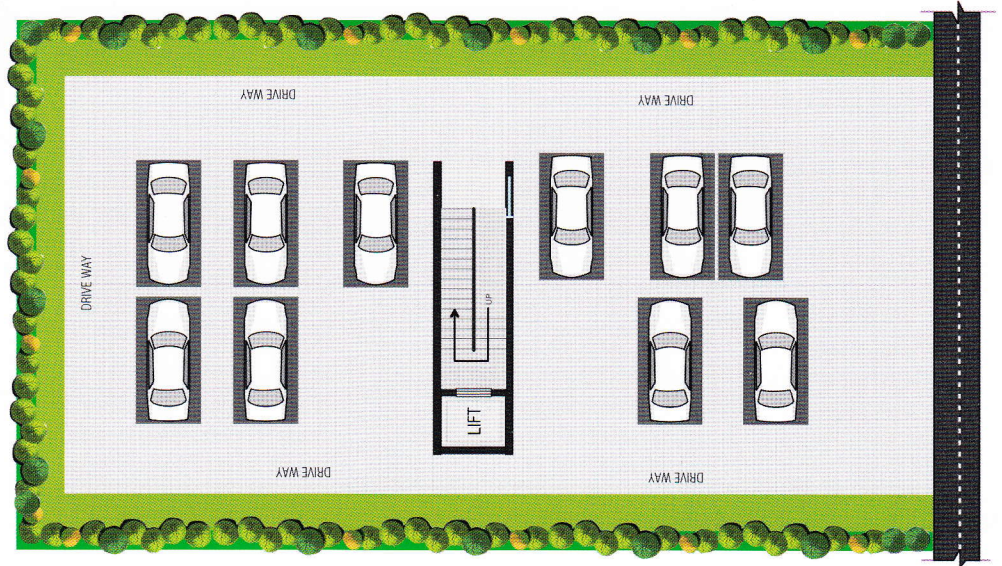


Aadler's  
S/HEIGHTS

# Floor Plans for Block B & C

Block - B&C  
 Each Flat Area  
 1366 Sft

## Car Parking Plans for Block B & C





# Location Map



www.aadtriconstructions.com



**Aadtri Constructions**  
*Shaping your Imaginations*

Flat No. 302, Sri Teja Residency, Vengal Rao Nagar, Hyderabad.  
 Tel: 040 - 2381 1145 | E-mail: aadtriconstructions@gmail.com

Marketed By:

**Aadya Properties**

Architecture by:

**OM SHAKTI DESIGNERS**

# 12-7-133/F, Opp. Kukatapally Circle Office,  
 IDL Road, Moosapet, Hyderabad - 500 018.

Note: This brochure is only a conceptual presentation of the project & not a legal offering. Promoters reserve the right to make changes in plan, specification & amenities provided in the brochure. Registration VAT & Service Tax extra as applicable.